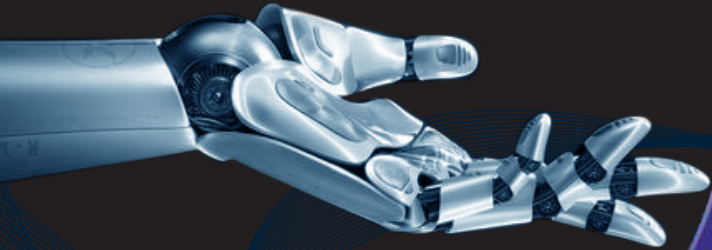




**GENVIK**

WE MAKE IT BETTER



ALL PRODUCT BOOKLET

## 80mm (3") Borewell Submersible Pumpset - KW Series

Specifications	KW Series	
Power Range	0.37 kW - 1.1kW (0.5 HP - 1.5 HP)	0.37kW - 1.1 (0.5 HP - 1.5 HP)
Speed	2800 RPM	2800 RPM
Version	Single Phase, 220V 50Hz, AC Supply	Single Phase, 220V 50Hz, AC Supply
Maximum Total Head	155 meter	70 meter
Maximum Flow Rate	1.5 lps (5.40 m <sup>3</sup> /h)	1.5 lps (5.40 m <sup>3</sup> /h)
Nominal Outlet Size	25 & 32 mm	32 mm

**Applications :** Domestic, Gardens, Irrigation, Agriculture, Farms, Industrial.

**Features :** Motor portion covered with corrosive resistance SS 304 shell. More durability and hygiene. High Operating efficiency. Specially designed thrust bearing to withstand high axial thrust load. Extremely hardwearing water lubricated bearing. Thread type motor construction ensures service feasibility. Designed for wide voltage operation. Additional intermediate bearing in higher stage pumps.



## 100mm (4") Borewell Submersible Pumpset - KW Series

Specifications	KW Series
Power Range	0.37 kW - 5.5 kW (0.5 HP - 7.5 HP)
Speed	2850 RPM
Version	Single Phase, 220V Three phase 380 - 400V, 50Hz, AC Supply
Maximum Total Head	502 meter
Maximum Flow Rate	7 lps (25.20 m <sup>3</sup> /h)
Nominal Outlet Size	32, 40, 50 & 65 mm

**Applications :** Domestic and municipal water supply, rural water supply, Sprinkler systems, Pressure boosting units, Industrial and mining, Fountains.

**Features :** Motor portion covered with corrosive resistance SS 304 shell. More durability and hygiene. High Operating efficiency. Specially designed thrust bearing to withstand high axial thrust load. Extremely hardwearing water lubricated bearing. Thread type motor construction ensures rigidity & service feasibility. Designed for wide voltage operation. Additional intermediate bearing in higher stage pumps.



## 100mm (4") Borewell Submersible Pumpset - KL Series

Specifications	KL Series
Power Range	0.37 kW - 5.5 kW (0.5 HP - 2 HP)
Speed	2850 RPM
Version	Single Phase, 230V Three phase 415V, 50Hz, AC Supply
Maximum Total Head	178 meter
Maximum Flow Rate	3.5 lps (12.60 m <sup>3</sup> /h)
Nominal Outlet Size	32, 40, & 50 mm

**Applications :** Domestic and municipal water supply, rural water supply, Sprinkler systems, Pressure boosting units, Industrial and mining, Fountains.

**Features :** Motor portion covered with corrosive resistance SS 304 shell. More durability and hygiene. High Operating efficiency. Specially designed thrust bearing to withstand high axial thrust load. Easy removal of stator ensures service feasibility. Designed for wide voltage operation. Non-toxic pre filled liquid motor ensures low voltage performance.



## Centrifugal Monoblock Pumpset - KC Series

Specifications	KC Series
Power Range	0.37 kW - 2.2 kW (0.5HP - 3 HP)
Speed	2880 RPM
Version	Single Phase 220 - 240V ; Three phase 380V - 415V, 50Hz, AC Supply
Maximum Total Head	60 meter & 34 meter
Maximum Flow Rate	18 lps (64.8 m <sup>3</sup> /hr) & 9 lps (32.4 m <sup>3</sup> /hr)
Degree of Protection	IP 44 / IP 54

**Applications :** Domestic, Multi storey buildings, Irrigation, Gardens, Rural water supply.

**Features :** High Operating efficiency. Motor is designed with higher cooling effect to ensure the life. Easy to dismantle and repair. Available in SS 304, CI and Noryl impellers. Available with 3 metre and 10 metre cable length



## Deepwell Centrifugal Jet Pumpset - KZ Series

Specifications	KZ Series
Power Range	0.37 kW (1HP) - 1.5 kW (0.5 HP - 2 HP)
Speed	2880 RPM
Version	Single Phase 220 - 240V ; Three phase 380V - 415V, 50Hz, AC Supply
Maximum Suction Lift / Head	92 meter
Maximum Flow Rate	50 lpm (3m <sup>3</sup> /hr)
Degree of Protection	IP 44 / IP 54

**Applications :** Domestic, Farms, Gardens, Civil applications.

**Features :** High Operating efficiency resulting in lower power consumption. Inbuilt thermal over load protector. The pumpset can be installed both in horizontal and vertical position. Available in Bronze and Noryl impellers. Available in Aluminium & Frame motor body.



## Centrifugal Jet Selfpriming Pumpset - KZS Series

Specifications	KZS Series
Power Range	0.37 kW - 0.75 kW (0.5 HP - 1.0 HP)
Speed	2880 RPM
Version	Single Phase 220 - 240V, 50Hz AC Supply
Maximum Total Head	47 meter
Maximum Flow Rate	56.6 lps (3.4 m3/hr)
Degree of Protection	IP 54

**Applications :** Shallow well, Small farms, Domestic, Pressure boosting, Gardens Fertigation, Drinking water supply.

**Features :** 30 feet suction lifting capacity. Specially designed for shallow well applications. High Operating efficiency resulting in lower power consumption. Back pull - out design for easy servicing and repair. Inbuilt thermal overload protector. Inbuilt non return valve. Specially coated pumps available for Fertigation application.



## Regenerative Selfpriming Monoset Pumpset - KR Series

Specifications	KR Series
Power Range	0.37 kW - 0.75 kW (0.5 HP - 1 HP)
Speed	1440 & 2880 RPM
Version	Single Phase 220 - 240V, 50Hz AC Supply
Maximum Total Head	50 meter
Maximum Flow Rate	1.17 lps (4.2 m3/hr)
Degree of Protection	IP 44

**Applications :** Domestic, Washing Gardens , Civil applications.

**Features :** Good suction lift characteristics. Accurate function of centrifugal governor & switch ensures the longer life of the motor. Specially designed mesh is provided in pump to avoid foreign particles. Special graded casting used in pump portion to prevent the wear & tear. High tensile brass impeller is used to increase the life of pump.





## Selfpriming Monoblock Pumpset - KM Series

Specifications	KM Series
Power Range	0.18 kW - 1.1 kW (0.25 HP - 1.5 HP)
Speed	2880 RPM
Version	1 Ph 220 - 240V, 3Ph - 38-415V, 50Hz AC Supply
Maximum Total Head	100 metre
Maximum Flow Rate	3800 lps (3.8 m3/hr)
Degree of Protection	IP 44

**Applications :** Domestic, Small Gardens Pressure boosting, Civil applications.

**Features :** Upto 328 feet working capacity. Built-in with imported thermal overload protector specially designed for wide voltage operation. Powder coated multi-color stator body sturdy and compact. Double seated ball bearing, so no need of external lubrication pumpset available with extension shaft for multi purpose application. Pumpset available with SG (Spheroidal Graphite) Iron casing which ensures longer life even at freezing temperature.



## Pressure Boosting System KB / KBZ Series

Specifications	KB/KBZ Series		
Liquid Temperature Upto	90°C	33°C	33°C
Power Ranges Upto	1.5HP	1HP	0.5HP
Hydraulic Performance			
Flow Upto	8 m <sup>3</sup> /hr	3.6 m <sup>3</sup> /hr	2.2 m <sup>3</sup> /hr
Maximum Pressure	5.5 bar	4.6 bar	3.0 bar

**Applications :** Residential Buildings, Industries, Hotels Hospitals, Apartments, Bungalows.

**Features :** Inbuilt thermal overload protector. Lesser running cost than the conventional systems. No manual interference to operate the plumbing system. High operating efficiency. Factor tested system and supplied as a package.



## Heavy Sewage Pump - KHS Series

Specifications	KHS SERIES
Power Range	2900 rpm : 5.5 kW - 15kW 1450 rpm : 7.5 kW - 37 kW
Speed	2900 rpm / 1440 rpm
Versions	3Ph, 380V / 415V - 50 Hz
Type of Duty	S1 (Continuous)
Degree of Protection	IP 68
Insulation Class	F
Impeller Type	Closed Double Channel
Motor Type	Dry (Rewindable)
pH Value	6 to 10
Head Maximum	2900 rpm : 62.5 m 1450 rpm : 42.5 m
Maximum Flow	2900 rpm : 160 m <sup>3</sup> /h 1450 rpm : 780 m <sup>3</sup> /h
Solid Handling Capacity	upto 55 mm
Maximum Liquid Temperature	40° C
Delivery Size	21/2", 3", 4", 6", 8" & 10"

**Applications :** Pumping waste water in industries, Pumping sewage water from stock farms & manhole sewer, Pumping municipal sewage water, Draining sewage water from hotels, houses, commercial buildings, complexes etc. Sewage treatment plants, Leather factories, Septic tank, Tunnels and mines.

**Features :** Heavy duty bearings, Inbuilt capacitor for specific models in 1PH, double mechanical, Seal various material option, Auto coupling compatibility.





**ACNAL INDUSTRIES PRIVATE LIMITED**

Toll Free : 1800 1200 4000 Email : [enquiries@genvikpumps.com](mailto:enquiries@genvikpumps.com) Website : [genvikpumps.com](http://genvikpumps.com)